



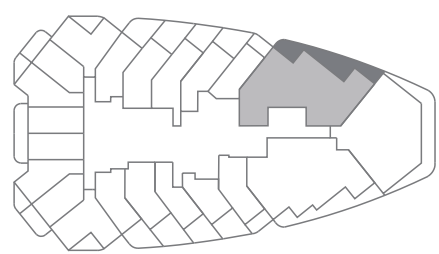
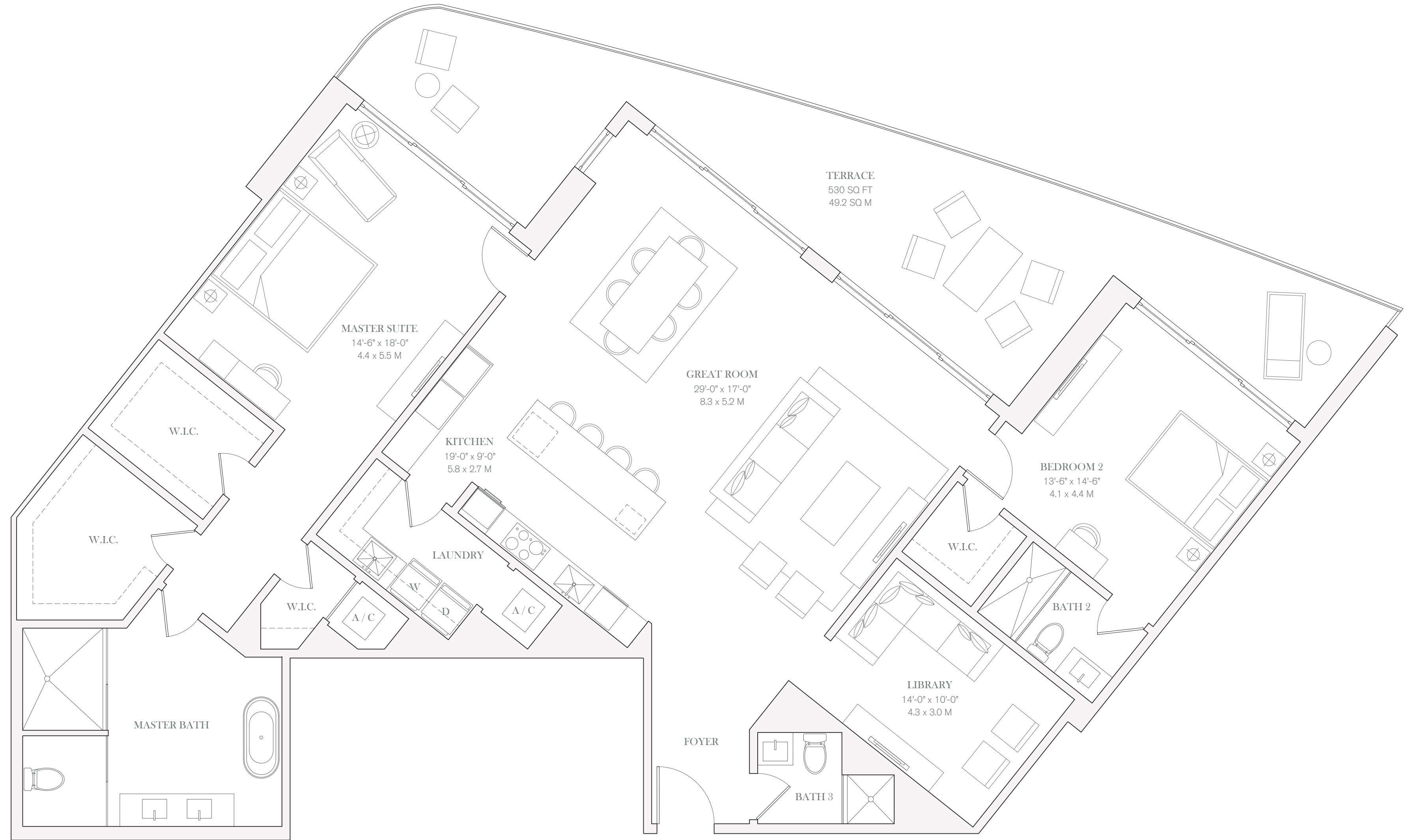
FOUR SEASONS
HOTEL AND PRIVATE RESIDENCES
Fort Lauderdale
A PROJECT BY FORT PARTNERS

**PRIVATE
RESIDENCE**

702, 802, 902, 1002, 1102

TWO BEDROOMS
LIBRARY
THREE BATHROOMS

INTERIOR
2,236 SQ FT / 207.7 SQ M
EXTERIOR
530 SQ FT / 49.2 SQ M



OCEAN VIEW



0 1 2 4 8