



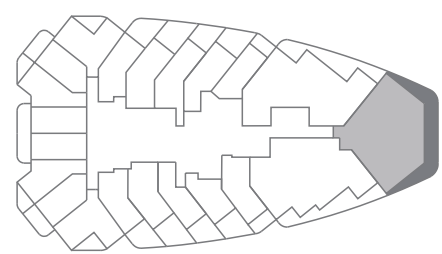
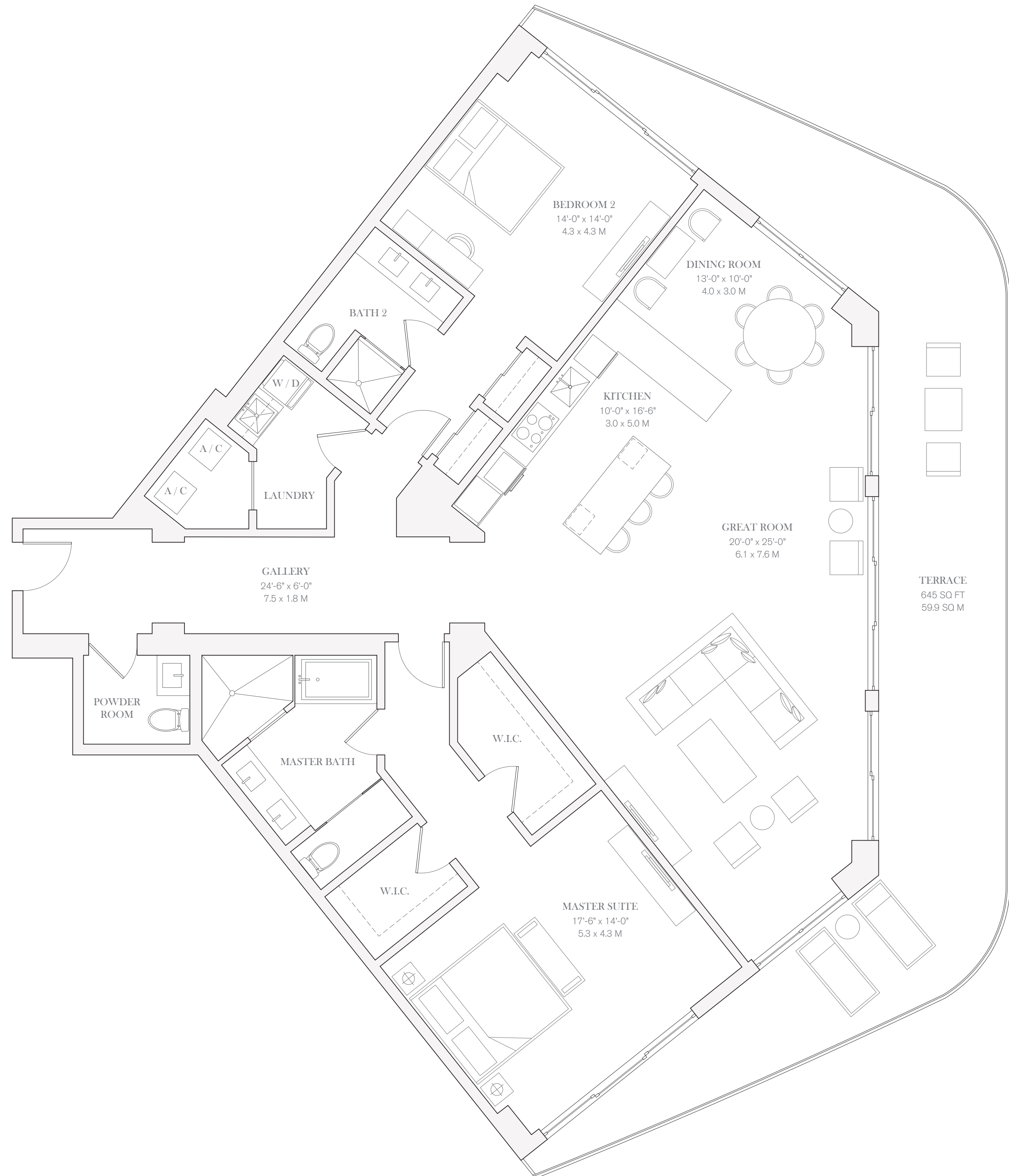
FOUR SEASONS
HOTEL AND PRIVATE RESIDENCES
Fort Lauderdale
A PROJECT BY FORT PARTNERS

**PRIVATE
RESIDENCE**

701, 801, 901, 1001, 1101

TWO BEDROOMS
TWO BATHROOMS
POWDER ROOM

INTERIOR
2,184 SQ FT / 202.9 SQ M
EXTERIOR
645 SQ FT / 59.9 SQ M



OCEAN VIEW



0 1 2 4 8