



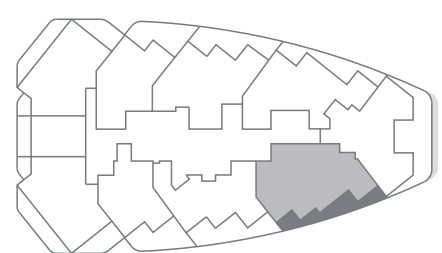
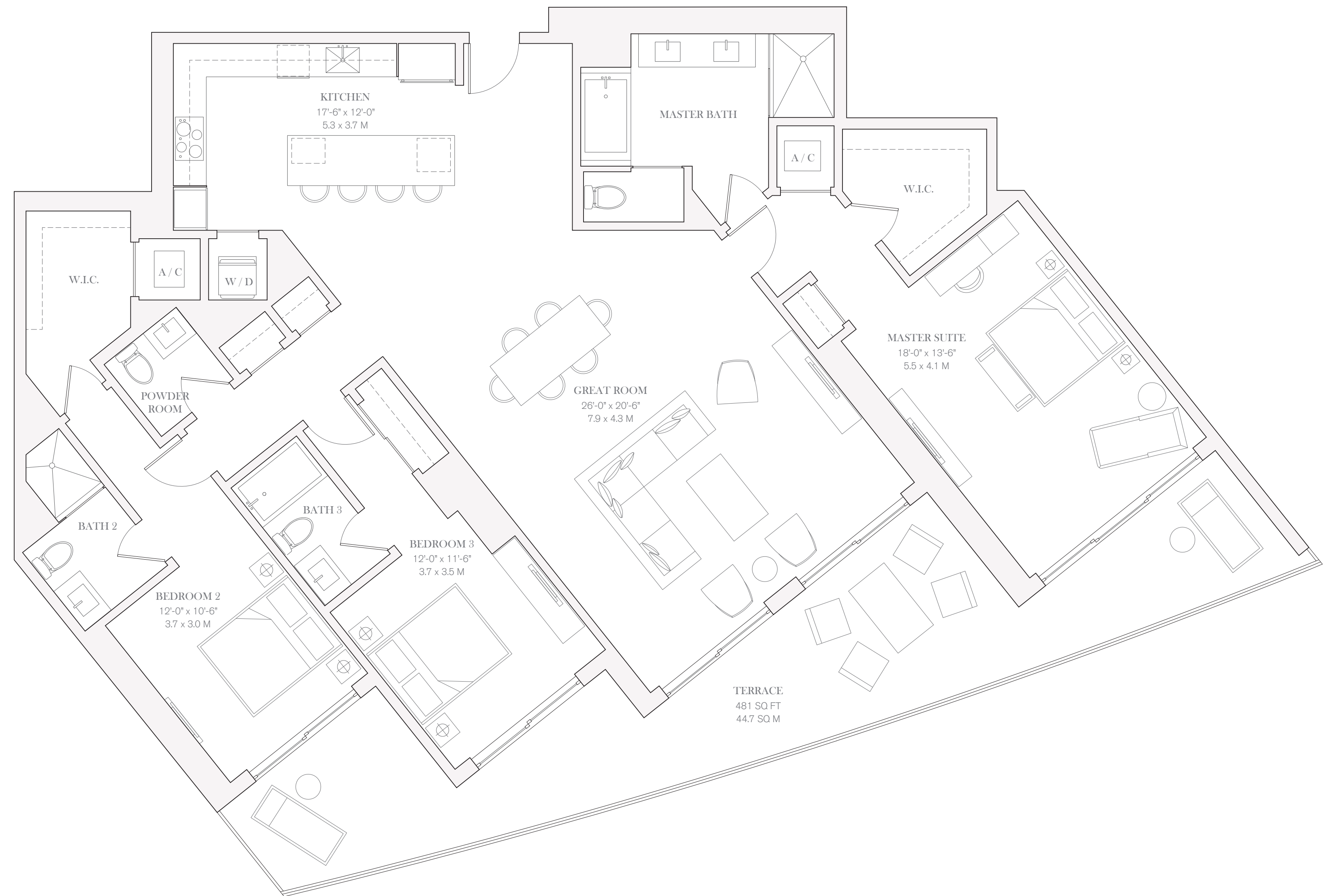
FOUR SEASONS
HOTEL AND PRIVATE RESIDENCES
Fort Lauderdale
A PROJECT BY FORT PARTNERS

**PRIVATE
RESIDENCE**

1203, 1403

THREE BEDROOMS
THREE BATHROOMS
POWDER ROOM

INTERIOR
2,66 SQ FT / 210.5 SQ M
EXTERIOR
481 SQ FT / 44.7 SQ M



OCEAN VIEW



0 1 2 4 8